

Miyakoh Botanic Garden Aoshima and Singapore Botanic Garden

Since the Aoshima Subtropical Botanic Garden and the Singapore Botanic Gardens signed Sister Garden agreement in 1965, they have deepened friendship through employee and plant exchange.



Standing in the southwest corner of the Glasshouse and majestically emitting water from its mouth, the Merlion statue was designed and erected in March, 2016 with permission from the Singaporean Tourism Board. Adjustments were made to the statue based on feng shui rules so that it is facing in the direction believed to be auspicious—88 degrees east.

Visitor Information

Opening hours ▶ 8:30a.m.~5:00p.m.
(open all year round)
Admission ▶ free of charge
※Four wheelchairs are available for loan free of charge

Glasshouse (Admission is free of charge)
Opening hours ▶ 9:00a.m.~5:00p.m.
Closed on Tuesdays (except national holidays)
Tropical fruit Glasshouse (Admission is free of charge)
Opening hours ▶ 9:00a.m.~5:00p.m.
Closed on Wednesdays (except national holidays)
Palo Borracho Café
Opening hours ▶ 10:00a.m.~5:00p.m.
(order closes at 4:30 p.m.)
Closed on Tuesdays (except national holidays)
Bicycle Rentals in Aoshima
Available hours ▶ 9:00a.m.~5:00p.m.
City cycle:500yen per day
Tandem bicycle:1000yen per day
※Bicycles are limited in number.
Study room ※Need to apply
480yen per hour (550yen if using the A/C)

Access

By bus... 25 minutes on an Aoshima/Nichinan-bound bus from Miyakoh City; get off at the Aoshima bus stop
By rail... 30 minutes on the Nichinan Line from Miyazaki Station; get off at Aoshima Station and walk 10 minutes



Miyakoh Botanic Garden Aoshima

2-12-1 Aoshima, Miyazaki City, Miyazaki Prefecture Tel:0985-65-1042 Fax:0985-55-4803
E-mail aoshima@mppf.or.jp http://mppf.or.jp/aoshima/

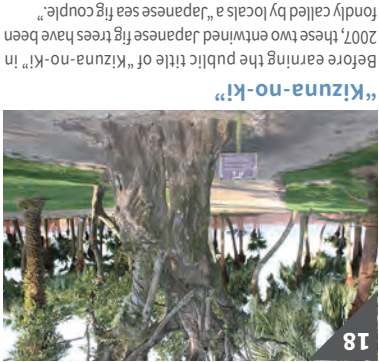
Designated Administrator Miyazaki Parks Association

Miyakoh Botanic Garden Aoshima

ENGLISH



Miyazaki Prefectural Aoshima Subtropical Botanic Garden



“Kizuna-no-ki”

Before earning the public title of “Kizuna-no-ki” in 2007, these two entwined Japanese fig trees have been fondly called by locals a “Japanese sea fig couple.”



Flower mountain

The roundabout welcomes visitors all year round with seasonal flowers. The Bougainvillea in spring is especially well-received.



Tropical fruit glasshouse

Various tropical fruit trees are on display, ranging from bananas to dragon fruits and false mangosteens.



Glasshouse

Tropical flowers are in bloom at any time of the year, including bougainvillea, plumeria, and royal poinciana.



Main gate

The design of the main gate is derived from images of Miyazaki Prefecture and the Singapore Botanic Gardens, Miyazaki's sister garden.

※1 Touta Kaneko The beginning of Touta Kaneko's haiku career dates back to 1937 when he was invited to a haiku gathering hosted by an eminent haiku poet, Santa Dezawa. The featured poem was composed during the Kyushu Regional Contemporary Haiku Contest held in Miyazaki City in October 2003 in the theme of Aoshima.
※2 Takashi Nagatsuka Takashi Nagatsuka is a poet who apprenticed under famed haiku poet Masaoka Shiki at the age of 21, and pioneered peasant literature. The engraved monument features a tanka poem that he composed during his 1914 trip to Aoshima.

- 1 Glasshouse
- 2 Administration building
- 3 Learning building
- 4 Subtropical fruit tree
- 5 Guide volunteer office
- 6 Culture greenhouse
- 7 Tropical fruit glasshouse
- 8 Event square
- 9 Flower spot
- 10 Chorisia speciosa (Palo borracho)
- 11 Lawn ground
- 12 Flower mountain
- 13 Queen palm
- 14 Banyan tree
- 15 Stone monument of poem [Touta Kaneko] ※1
- 16 Palm collection
- 17 Chinese fan palm
- 18 “Kizuna-no-ki”
- 19 Stone monument of poem [Takashi Nagatsuka] ※2
- 20 Gazebo ※Under construction



The Miyakoh Botanic Garden Aoshima has conducted tests and research on acclimatizing subtropical plant seeds and seedlings that were donated from Brazil and Argentina, contributing to shaping the image of Tropical Miyazaki. The Garden also signed a Sister Garden Agreement with the prestigious Singapore Botanic Garden in October, 1965 and has strived to deepen mutual understanding. Please make yourself at home and bask in the Garden's tropical atmosphere.

Welcome to Miyakoh Botanic Garden Aoshima!



Bougainvillea

Bougainvillea is a popular tropical flower distinguished by its vivid red and pink colors. 16 varieties of the flower are lined up in the Garden, eight of which are cuttings donated from the Singapore Botanic Garden and cultivated in Miyazaki. They are trained into different shapes, such as an umbrella or arch.



Bougainvillea 'xspectro-glabra' 'Jubilee'



Bougainvillea 'Pigeon Blood'



Bougainvillea 'Double White'

Three orchids from the Singapore Botanic Garden

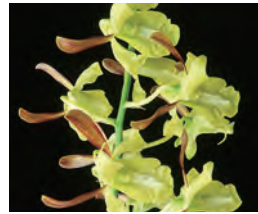
Since the Botanic Garden concluded a sister garden agreement with the Singapore Botanic Garden in 1965, two orchids “Renantanda Akihito” and “Dendrobium Michiko” that were named after their Imperial Majesties, and another orchid “Miss Joaquim” have been sent from Singapore, in 2007 and 2015 respectively.



Papilionanthe Miss Joaquim



Renantanda Akihito



Dendrobium Michiko

The world top 3 flowering trees

In the Miyakoh Botanic Garden Aoshima, visitors get to see the world’s top 3 flowering trees at a glance: Jacaranda in the event square, and Spathodea campanulata and Delonix regia in the glasshouse. The Jacaranda tree in the event square is the oldest of its kind in Miyazaki Prefecture and said to be the parent tree of the Jacaranda forest in Nango, Nichinan.



Jacaranda mimosifolia



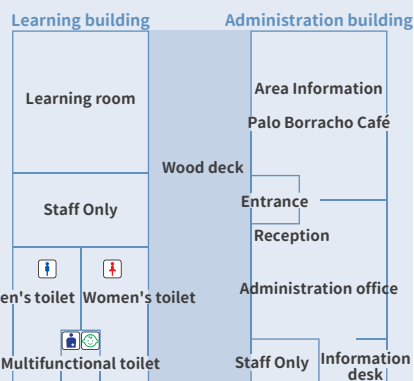
Spathodea campanulata



Delonix regia

Administration Building Learning Building

The administration building has a reception desk, café, as well as free wi-fi. There is also a handicapped accessible restroom equipped with a baby crib in the learning building. Feel free to ask any question at the reception desk.



Palo Borracho Café

Opening hours ▶ 10:00a.m.~5:00p.m. (order closes at 4:30 p.m.)
Closed on Tuesdays (except national holidays)

Palo Borracho Café offers a fantastic view of Aoshima and refreshing beverages made with tropical fruits, including a mango smoothie using Miyazaki’s fully ripe mangoes. The café is open to all visitors. Feel free to drop by and catch a break here even if you don’t plan to order off the menu.



Bicycle Rentals in Aoshima

Available hours ▶ 9:00a.m.~5:00p.m.
City cycle:500yen per day
Tandem bicycle:1000yen per day
※Bicycles are limited in number.

Why not tour Aoshima on a bicycle?
Please come to the reception desk to rent a bicycle.
We also take advance registration.



Learning programs

We offer several experiential learning programs for children. These programs are suitable for school excursions and extracurricular activities. Please contact the administration office if you are interested.



Study Room

470yen per hour
(540yen if using the A/C)

The study room can be rented on an hourly basis for a study group meeting. Please come to the reception desk for reservation if you wish to use the study room.

Glasshouse

Complete with a wide range of plants from groundcovers to large flowering trees, the Glasshouse offers a “tropical flower garden” all year round.

Filled with approximately 1,600 plants in a 20-meter by 20-meter area. The ceiling reaches 14 meters for the flowers and trees to grow tall enough, allowing visitors to observe the flowers up close and look down the colorful scenery from the corridor on the 2nd floor.

Two of the world’s top3 flowering trees—Spathodea campanulata and Delonix regi—comprise of the tall trees in the Glasshouse. (Jacaranda, another flowering tree, is planted outdoors)

Exotic flowers comprise of the smaller trees and shrubs, such as Bougainvillea, Solandra maxima, Strongylodon macrobotrys, and Medinilla magnifica.



Opening hours ▶ 9:00a.m.~5:00p.m.
Days closed ▶ Every Tuesday
(Except national holiday)
Admission fee ▶ Free



W22.5m, H14.7m, L24m, A610㎡

Tropical fruit glasshouse

Tropical fruit tree greenhouse was built in August 1977 and rebuilt in March 2018 due to deterioration.

In the greenhouse there are 26 types and 53 varieties of tropical fruits, which are easy to grow, including fruits familiar in Miyazaki such as mango, papaya, Carambola and guava so that you can view fruits all year round. You will enjoy tropical fruits from different points of view: funny and extraordinarily looking trees such as jaboticaba which bears fruits directly on its trunk and longan whose fruit looks like a dragon’s eye; handy trees for our life such as sapodilla which is an ingredient of chewing gum and cinnamon, the spice.

We have 4 to 15 varieties of banana, pineapple and papaya trees whose fruits are familiar to us and displayed as a collection.



Opening hours ▶ 9:00a.m.~5:00p.m.
Days closed ▶ Every Wednesday
(Except national holiday)
Admission fee ▶ Free



Solandra maxima
Flowering Period : Nov.~Jan.



Strongylodon macrobotrys
Flowering Period : Mar.~Apr.



Caesalpinia pulcherrima
Flowering Period : May~Nov.



Plumeria cv.
Flowering Period : Jun.~Jul.



Dombeya wallichii
Flowering Period : Nov.~Jan.



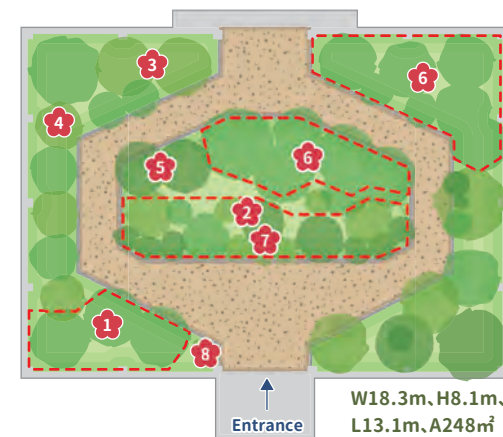
Petrea volubilis
Flowering Period : Mar.~May



Pavonia intermedia
Flowering Period : All year around



Medinilla magnifica
Flowering Period : Nov.~Jan.



W18.3m, H8.1m,
L13.1m, A248㎡



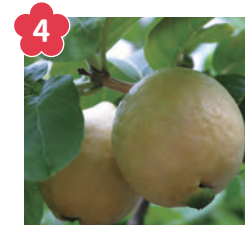
Mangifera indica
Crop Season : Jun.~Aug.



Carica papaya
Crop Season : All year around



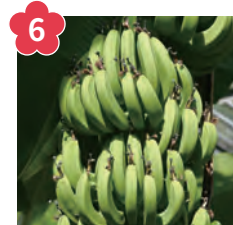
Averrhoa carambola
Crop Season : Sep.~Mar.



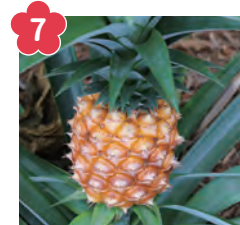
Psidium guajava
Crop Season : Jul.~Oct.



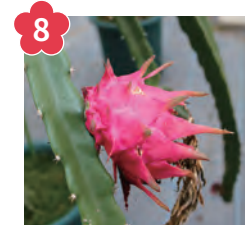
Plinia cauliflora
Crop Season : Nov.~Mar.



Musa spp.
Crop Season : Irregular



Ananas comosus
Crop Season : Irregular



Hylocereus undatus
Crop Season : Jul.~Oct.